

OUR SECTORS OF ACTIVITY

- Space
- Aeronautics
- Industry
- Defense
- Energy
- Transport
- Telecoms



Photonics Characterisation Laboratory

Since 2003, AdvEOTec carries out measurements, tests and expertises on optoelectronic components and systems, from evaluation to the complete qualification of these systems.

Our laboratories are intended for your demanding environments : Space, Aeronautics, Industry, Defence, Energy, Transport, Telecoms and Radiations.




QUALITY CERTIFICATIONS



CONTACT US

 www.adveotec.com

 +33 (0)1 60 86 43 61

 salesdpt@adveotec.com

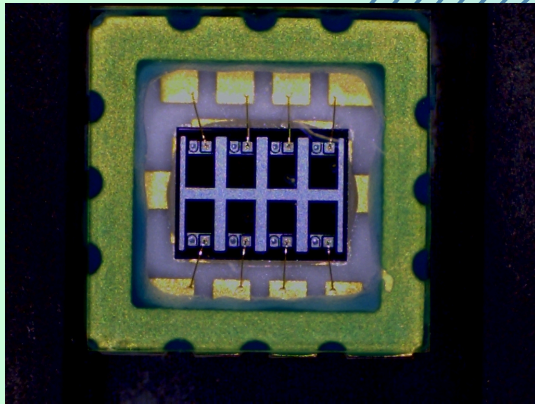
 6 Rue Jean Mermoz,
91080 Evry-Courcouronnes - FRANCE

 Join us on
AdvEOTec and AdvEOTec TestLab

S.A.S. Capital €72,000 - 449 130 467 RCS EVRY - APE 7490B



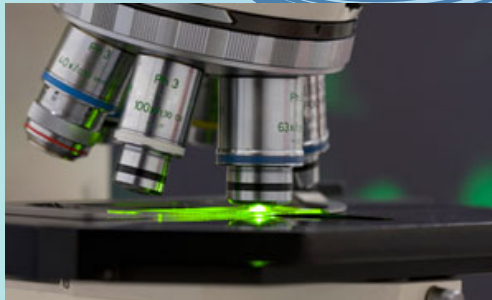
OPTICAL DETECTORS AND IMAGERS



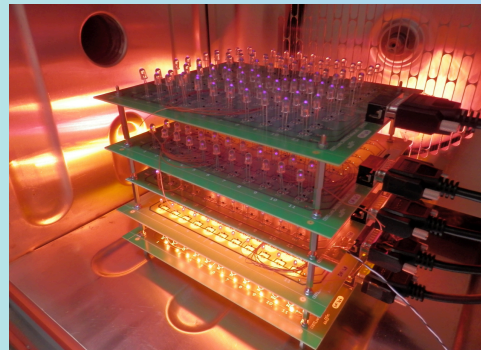
- ➔ Dark current versus voltage ($I_{obs}(V)$)
- ➔ Sensitivity versus wavelength ($S(\lambda)$)
- ➔ Photocurrent versus voltage ($I_{ph}(V)$)
- ➔ Capacity versus voltage ($C(V)$)
- ➔ Response Time (t_r, t_f)
- ➔ Gain versus voltage ($M(V)$)
- ➔ Optical crosstalk (XT)
- ➔ Pixel Noises (FPN)
- ➔ Pixel Linearity and Uniformity
- ➔ Conversion Gain
- ➔ Quantum Efficiency

VISUAL INSPECTION

- ➔ Internal and external visual inspections
- ➔ Defect mapping: residues, delaminations, chips, scratches, particles

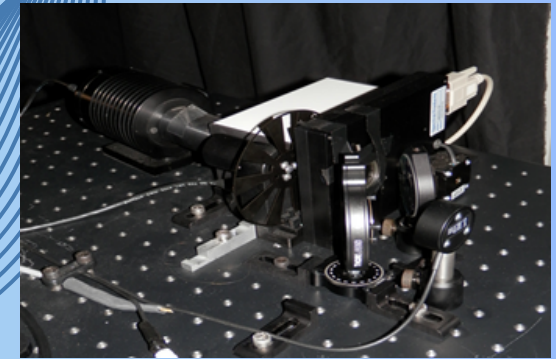


OPTICAL EMITTERS



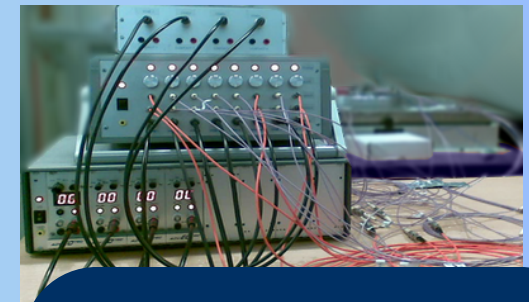
- ➔ Energy
- ➔ Spectral radiometry
- ➔ Spatial radiometry
- ➔ Fluorescence
- ➔ Bit Error Ratio (BER) measurements

FREE SPACE OPTICS



- ➔ Photopic and scotopic measurements
- ➔ Spectral and spatial radiometry
- ➔ Reflection or Transmission coefficient as a function of wavelength

GUIDED OPTICS



- ➔ Insertion Loss (IL)
- ➔ Return Loss or Reflection Ratio (RL)
- ➔ Polarisation Dependence Loss (PDL)
- ➔ Optical crosstalk
- ➔ Polarization Dependence Loss (PDL)